

## Demodulator Device for ATSC3.0



### CXD2878ER

DVB-T/T2/C/C2/S/S2  
 ISDB-T/C/S J.83A/B/C  
**ATSC1.0 / ATSC3.0**

### CXD2878ER

CXD2878ER is a high-performance multi-standard (Terrestrial, Cable and Satellite) demodulator LSI suitable for world wide applications. The latest ATSC3.0 demodulation algorithms are incorporated in an optimized single package, low bill of materials solution.

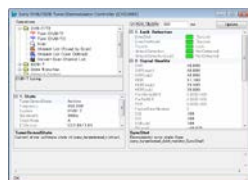
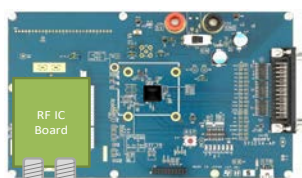


### DEVICE SPECIFICATION

Device Specification Detail			CXD2878ER
Target markets			Europe, ASEAN, India, Middle East, Africa, Japan, Latin America, <b>North America, South Korea</b>
Broadcasting standard	Terrestrial	DVB	ETSI EN 300-744 / ETSI EN 302-755
		ISDB	ARIB STD-B31
	Cable	ATSC	A/53 / <b>A/322</b>
		DVB	ETSI EN 300-429 / ETSI EN 302-769
Satellite	Other	ITU-T J.83 / ITU-T J.382, ETSI EN 300-421 / ETSI EN 302-307	
	DVB	ETSI EN 300-421 / ETSI EN 302-307	
Host interface		ISDB	ARIB STD-B20
		Control	I2C
		Streaming	TS / ALP
Operating temperature			-20C to 85C
Package			QVFN 7mm□ 48pin
Schedule			MP Ready

### DEVELOPMENT KIT

Design collateral : Datasheet / Application notes / S/W driver / H/W schematics, BOM  
 Evaluation collateral: Evaluation board / Windows GUI / Test results



### CONTACT

US Region	Other Region
<a href="mailto:Jay.Simpson@sony.com">Jay.Simpson@sony.com</a>	<a href="mailto:Hiroshi.C.Tanaka@sony.com">Hiroshi.C.Tanaka@sony.com</a>

## Sony “Tuner +Demodulator” Device



**CXD6800GL**

DVB-T/T2/C/C2,  
ISDB-T/C J.83A/B/C

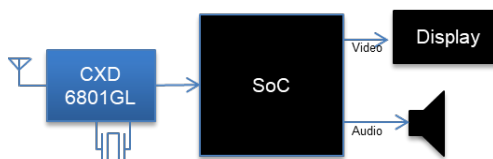


**CXD6801GL**


DVB-T/T2/C/C2,  
ISDB-T/C J.83A/B/C  
**ATSC1.0 / ATSC3.0**

### CXD6800GL/6801GL

These are Tuner One Package ICs (integrated RF tuner and demodulator) that conform to Terrestrial and Cable standards. The RF tuner block provides low noise, low spurious, excellent protection ratio to interference and high reception sensitivity. The demodulator block offers class-leading performance, optimized BOM requiring no external memory and low processor overhead.

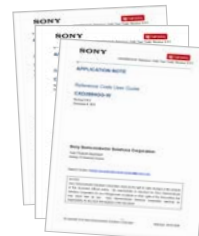


### DEVICE SPECIFICATION

Device Specification Detail			CXD6800GL	CXD6801GL
Target markets			Europe, ASEAN, India, Middle East, Africa, Japan, Latin America,	Europe, ASEAN, India, Middle East, Africa, Japan, Latin America, <b>North America, South Korea</b>
Broadcasting standard	Terrestrial	DVB	ETSI EN 300-744 / ETSI EN 302-755	
		ISDB	ARIB STD-B31	
		ATSC	-	A/53 / <b>A/322</b>
	Cable	DVB	ETSI EN 300-429 / ETSI EN 302-769	
Other		ITU-T J.83 / ITU-T J.382, ETSI EN 300-421 / ETSI EN 302-307		
Host interface		Control	I2C	
		Streaming	TS	TS / ALP
Operating temperature			-20C to 85C	
Package			 VFLGA 5.2mm x 8.4mm 0.65mm Pin pitch (Pin Compatible)	
Schedule			MP: Ready	MP Ready

### DEVELOPMENT KIT

Design collateral : Datasheet / Application notes / S/W driver / H/W schematics, BOM  
 Evaluation collateral: Evaluation board / multi-tuner reference / Windows GUI / Test results



### CONTACT

US Region	Other Region
<a href="mailto:Jay.Simpson@sony.com">Jay.Simpson@sony.com</a>	<a href="mailto:Hiroshi.C.Tanaka@sony.com">Hiroshi.C.Tanaka@sony.com</a>

**NOTICE (Exemption)**

Sony reserves the right to change the contents noted in this manual without prior notice. This information does not convey any license by any implication or otherwise under any intellectual property or other right. Application circuits shown, if any, are typical examples illustrating the operation of the devices. Sony cannot assume responsibility for any problems arising out of the use of these circuits. The contents noted in this manual are the exclusive property of Sony Corporation, and may not be transferred or duplicated in any form, in part or in their entirety, without the express written permission of Sony Corporation.